

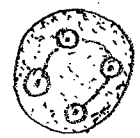
room: Outline of Medical Parasitology, John E. Faish, 1964



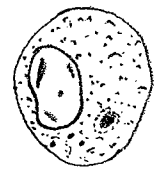
rice starch grain



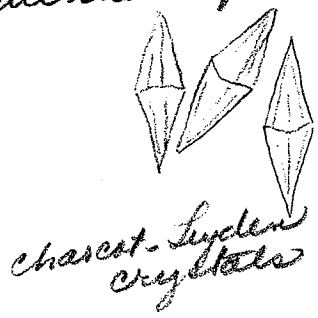
drisk potato starch grain



polymorphonuclear leukocyte



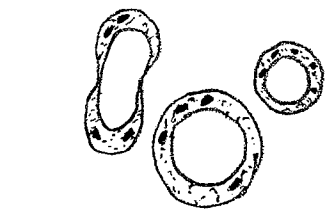
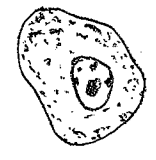
squamous epithelial cells



cholesteryl crystals



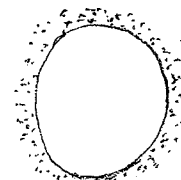
yeast cells



Blastocystis, a common yeast oops!!



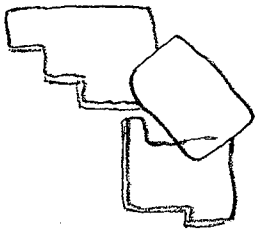
oil droplet



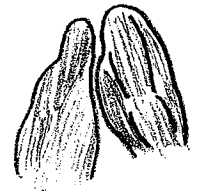
air bubble



wheat grain



cholesterol crystals



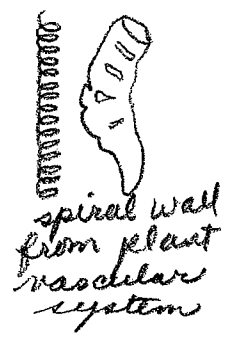
Beef or pork muscle



vegetable cell



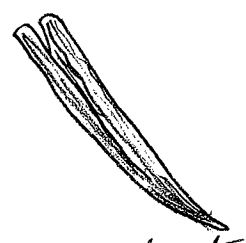
mammalian hair



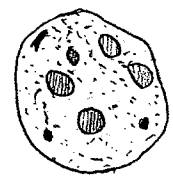
spiral wall from plant vascular system



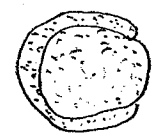
cotton fiber



plant hair



deteriorated macrophage with cent nucleus



homogeneous cleft



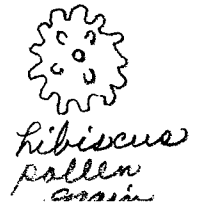
broom sage pollen grain



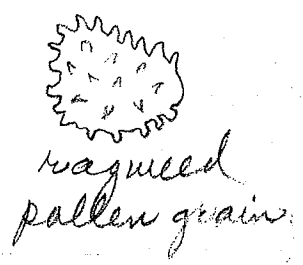
pine pollen grains



African violet pollen grain



hibiscus pollen grain



ragweed pollen grain